

Tender Ref. No.- ROBHIN/A&S/2024-25/340

Date- 28.11.2024

## TENDER NOTICE

**AIR CONDITIONING RELATED WIRING AND PIPING WORKS AND AUTOMATIC VOLTAGE CONTROLLER FOR ARYAVART BANK AT REGIONAL OFFICE BHINGA AT VILLAGE/ MOHALLA-PURE KHAIRE, PARGANA-BHINGA, DISTT-SHRAVASTI (U.P.)**

The bank invites tender from bank's empanelled contractors under Air conditioner contractors category for the above mentioned work for which schedule of quantities, quotation & specifications are available at bank's website <http://www.aryavart-rrb.com> and the same is available at Bank's Regional Office at Aryavart Bank, First Floor, Hospital Chauraha, Civil Lines, Bahraich-271801.

Sealed tender should reach Bank's Aryavart Bank Regional Office at First Floor, Hospital Chauraha, Civil Lines, Bahraich-271801 on or before 2:00 P.M. on date 12.12.2024 in sealed cover/envelope. The tenders shall be opened on the same day at 5:00 P.M. The tenders received late on account of any reason whatsoever shall not be entertained.

The tender shall be valid for a period of not less than 90 days of opening of tender.

Time of Completion 21 days.

(From date of award of work)

Aryavart Bank, shall not be bound to accept the lowest tender & reserves the right to accept or reject any or all the tenders without assigning any reason whatsoever.

Yours faithfully,

Amit Varshney  
(Regional Manager)




	Providing and fixing Stabilizer with 3-4 step relay and input voltage range of 130-270 V and output to be 230-240 V (Blue bird/ Logic state/ Inline/ V-Gaurd/Equivalent Reputed Make) (copper winding).				
A.	4 KVA (For 1.5/ 2.0 TR Split AC)	Nos.	2		
B.	4 KVA (For 1.5/ 2.0 TR Split AC)	Nos.	12		
<b>4</b>	<b>AIR-CONDITIONERS STAND</b>				
	<b>MS-STAND</b> - Providing and fixing of lockable caging for outdoor unit grouted on wall or on roof with open able shutter made of 10 X 10 mm MS square bars placed vertically @ 5" c/c welded with 40 X 3 mm MS flat all-round. The frame shall be of angle 35mm*35mm and it shall be fixed to wall or roof with proper MS bracket to tackle the weight of outdoor unit. Item includes all necessary hardware, priming coat, synthetic enamel paint, hanger, clamps other accessories etc. All complete as per approval and instructions of the employer. Size shall be adequate for AC outdoor size & sufficient space around the outdoor suitable for servicing purpose for				
A	For 1.5/2 TR Spilit AC	Nos.	14		
B.	MS-WALL Maunting STAND -	Nos.	14		
<b>5</b>	<b>ELECTRICAL CABLES</b>				
	Suitable IS/BIS standard Cable of 1.1-2.2 KV, Multi strand, FRLS 4- 4 C 6.0 Sqmm) as per design requirement of Peak load calculation of specific ACs system installed at site with 1"/1.2"/2" PVC conduit pipe between indoor/outdoor unit				
A	Supplying and laying of Extra Electrical interconnecting control cable from indoor to outdoor of size as specified by the manufacturer suitable for 1.5/2.0 TR Split type AC.	Mtr.	240		
<b>7</b>	<b>CORE CUTTING</b>				
A	Core cutting member in Non RCC	Mtr.	125		
<b>Amount in words -</b>					
			<b>VIVEK SINGH</b>	Digitally signed by VIVEK SINGH Date: 2024.05.22 17:54:11 +05'30'	



*Handwritten signature in blue ink.*

*Handwritten signature in black ink.*

*Handwritten signature in blue ink.*

<p><b>Architects Engineers &amp; Valuers</b></p> <p>Government of India Registered Valuer</p> <ul style="list-style-type: none"> <li>• Institute Reg. No. 282/2005 (AT 1) Under Public Property</li> <li>• Institute of International Appraisers &amp; Valuers</li> <li>• Registered Architect (A) - Institute of Engineers - (I.E.I.A.)</li> <li>• Registered Engineer - Registration No. AM/05/032/05</li> <li>• Approved Architect (A) (I.A. App.)</li> <li>• Expert in Water Proofing for Multistoried Residential and Commercial Building</li> <li>• Best Testing, Earth Testing and Antitermite Treatment</li> <li>• Member of Indian Road Congress</li> <li>• Fellow (F.I.) Approved</li> <li>• Institute of International Appraisers and Valuers</li> <li>• Institute of Valuers (India) Reg. No. IV/9321</li> <li>• Indian Association of Structural Engineers</li> <li>• Member of Consulting Engineer Association of India</li> </ul>		<p><b>CORNER'S 'n' EDGES</b></p> <p><i>Prop. Vivek Singh</i></p> <p>BE (CIVIL), M.T.E., (Arch.) FIV, AMIE, AMIV, M.I.R.C. <b>CHARTERED ENGINEER</b></p>
--	---	---

**Quotation Of A C FOR . BRICKWORK WORKS At ARYAVART BANK Regional office Bhingra**

Sr. No	Split units AIR CONDITIONERS	Unit	Quantity	Rate	Amount
<b>A.</b>	<b>PART - A</b>				
	<b>HIGH SIDE WORK</b>				
	<b>Description</b>				
<b>1</b>	Supplying, erection, testing and commissioning following cassette units of ( Hitachi/ Daikin/Voltas/) with cordless remote complete with all necessary fittings duly insulated with 9 mm thick nitrile rubber pipe insulation with fan and fan motor, machine control panel improved Refrigerant Joints, .Air conditioners shall be fitted with hermetically sealed type suction cooled reciprocating or discharge cooled rotary compressor or scroll compressor. Compressor unit operating on <b>R-22/ R-410</b> . All complete as per drawing, approval and instructions of the Employer				
<b>A.1.5</b>	<b>TR Cassette units including all necessary fittings and mountings as specified by the manufacturer.</b>	Nos.	2	NA	NA
<b>B.2</b>	<b>TR cassette units including all necessary fittings and mountings as specified by the manufacturer.</b>	Nos.	10	NA	NA
<b>B.</b>	<b>PART - B</b>				
	<b>LOW SIDE WORK</b>				
<b>1</b>	<b>EXTRA REFRIGERANT PIPING</b>				
	Supplying and laying of Extra copper refrigerant piping with nitrile rubber pipe insulation, both of size as specified by the manufacturer suitable for 1.0 TR/ 1.5/2.0 TR Split type AC and 2.0/3.0 TR Cassette AC (From Indoor to outdoor Units) Beyond 3 M.				
<b>A.</b>	For 1.5 TR Cassete AC	Mtr.	35		
<b>B.</b>	For 2 TR Cassete AC	Mtr.	175		
<b>2</b>	<b>DRAIN PIPING</b>				
	Providing and fixing drain piping up to drain as directed by the engineer in charge with all accessories e.g. elbows, unions, sockets, reducers, reducing tees, nipples etc. Complete job including cutting chiseling in walls, fixing with GI clamps, floor and making good of all chases/ cuts etc. and discharging the drain into a floor trap/ gully as per site conditions with insulation, both as specified by the manufacturer.				
<b>a.</b>	32 mm dia PVC drain pipe for Split AC	Mtr.	175		
<b>3</b>	<b>AUTOMATIC VOLTAGE CONTROLLER</b>				
	Stabilizer shall be Automatic version with copper coil transformer and the voltage selection range shall be minimum depending on lowest peak recorded average in a month. Precise output voltage range (130V-170V to 240V-270 V) Ensure the rating of Stabilizer shall be in accordance with max rated power of ACs considering instantaneous peak load fluctuation.				




## DETAILED SPECIFICATIONS FOR ELECTRICAL WORKS

**PLEASE NOTE : ALL WIRE & CABLE TO BE CU., FR – LSH CONFIRMING TO IS 694:1990 WITH LATEST MMENDMENTS.**

### **B. ELECTRICAL WORKS**

#### **a. LIGHT, FAN, 6 AMPS., 6/16 AMPS.**

##### **1. Primary Light, Fan & 6 Amps. Switch Points.**

Providing, storing & installing in position, effecting proper connection, testing and commissioning of Light, fan & 6 Amps. Switch Points with an additional indicator and 6 Amps. Switch & Socket on all module plates. It shall have **2 Nos. 1.5Sq.mm. FRLSH Wire** laid in PVC conduit pipe or required dia., concealed in wall/floor/panelling/partitions or above false ceiling. The work shall also include for cutting chases for conduits and moulded boxes, if required, in the wall/floor (without damaging the building) along with clamping the conduits at every 450mm interval and finally finishing the surface and matching the level with existing.

The rate shall include for all materials, labour, T&P, taxes, levies, scaffolding, shifting of furniture, carting away the debris and cleaning the floor etc.

PVC Conduit –of required dia. and 2mm thick, with all accessories e.g. long/short bends, tees, junction boxes etc. and clamps at every 450mm interval.

The job shall be complete, to the satisfaction of the Bank /Architect.

##### **2. Secondary Light, Fan & 6 Amps. Switch Points.**

Providing, storing & installing in position, effecting proper connection, testing and commissioning of Light, fan & 6 Amps. Switch Points with an additional indicator and 6 Amps. Switch & Socket on all module plates. It shall have **2 Nos. 1.5Sq.mm. FRLSH Wire** laid in PVC conduit pipe or required dia., concealed in wall/floor/panelling/partitions or above false ceiling. The work shall also include for cutting chases for conduits and moulded boxes, if required, in the wall/floor (without damaging the building) along with clamping the conduits at every 450mm interval and finally finishing the surface and matching the level with existing.

The rate shall include for all materials, labour, T&P, taxes, levies, scaffolding, shifting of furniture, carting away the debris and cleaning the floor etc.

PVC Conduit –of required dia. and 2mm thick, with all accessories e.g. long/short bends, tees, junction boxes etc. and clamps at every 450mm interval.

The job shall be complete, to the satisfaction of the Bank /Architect.

##### **3. Circuit Wiring (Light, Fan & 6 Amps. Switch Points).**

Providing, storing & installing in position, effecting proper connection, testing and commissioning of Circuit Wiring for light, fan & 6 Amps. Switch points **with 3 Nos. 1.5 Sq.mm. FRLSH Wire** laid in 19mm dia. PVC conduit pipe concealed in wall/floor/panelling/partitions or above false ceiling. The work shall also include for cutting chases for conduits and moulded boxes, if required, in wall floor (without damaging the building) along with clamping the conduits at every 450mm interval and finally finishing the surface and matching the level with existing.

The rate shall include for all materials, labour, T&P, taxes, levies, scaffolding, shifting of furniture, carting away the debris and cleaning the floor etc.

PVC Conduit of required dia. and 2mm thick, with all accessories e.g. long/short bends, tees, junction boxes etc. and clamps at every 450mm interval.

The job shall be complete, to the satisfaction of the Bank /Architect.

##### **4. 6/16 Amps. Switch Socket.**

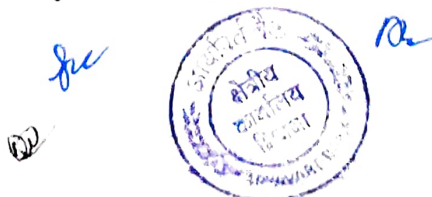
Providing, storing & installing in position, effecting proper connection, testing and commissioning of 6/16 Amps. Switch Socket on module plates. The work shall also include for cutting chases for moulded boxes, if required, in wall/floor (without damaging the building) and finally finishing the surface and matching the level with existing.

The rate shall include for all materials, labour, T& P, taxes, levies, scaffolding, shifting of furniture, carting away the debris and cleaning the floor etc.

The job shall be complete, to the satisfaction of the Bank /Architect.

##### **5. Circuit Wiring (6/16 Amps. Switch Points).**

Providing, storing & installing in position, effecting proper connection, testing and commissioning of Circuit Wiring for 6/16 Amps. switch points with **3 Nos. 4.0 Sq.mm. FRLSH wire** laid in 19mm dia. PVC conduit pipe concealed in wall/floor/panelling/partitions or above false ceiling. The work shall also include for cutting chases for conduits and



moulded boxes, if required, in wall/floor (without damaging the building) along with clamping the conduits at every 450mm interval and finally finishing the surface and matching the level with existing.  
The rate shall include for all materials, labour, T&P, taxes, levies, scaffolding, shifting of furniture, carting away the debris and cleaning the floor etc.  
PVC Conduit of required dia. and 2mm thick, with all accessories e.g. long/short bends, tees, junction boxes etc. and clamps at every 450mm interval.  
The job shall be complete, to the satisfaction of the Bank /Architect

#### **b. U.P.S. & COMPUTERISATION.**

##### **6. Selector Switch.**

Providing, storing & installing in position, effecting proper connection, testing and commissioning of 1 No. Selector Switch (three phase to single phase) with 4 pole, 63 Amps., MCB Isolator. It shall also have 3 Nos. indicating lamps (red, orange and blue).

The job shall be complete, to the satisfaction of the Bank /Architect.

##### **7. 4 Way TPN DB.**

Providing, storing & installing in position, effecting proper connection, testing and commissioning of TPN distribution boards manufactured out of 14 SWG, CRCA sheet, duly painted, complete with copper bus bars, neutral link, earth strip, cable alley etc. as required. The work shall also include for cutting chases for moulded boxes, if required, in wall/floor (without damaging the building) and finally finishing the surface and matching the level with existing.

It shall have the following –

1 No., 4 WAY TPN DB.

Makes –

DB – MDS.

The job shall be completed, to the satisfaction of the Architect.

##### **8. Circuit Wiring (UPS DB to Computer Points).**

Providing, storing & installing in position, effecting proper connection, testing and commissioning of Circuit wiring between UPS DB and computer points with **3 Nos. 1.5 Sq.mm. Cu. FRLSH** wire laid in PVC channel for vertical drop/PVC conduit of required dia., concealed in wall / floor /panelling / partitions or above false ceiling. The work shall also include for cutting chases for conduits and moulded boxes, if required, in the wall/floor (with out damaging the building) along with clamping the conduits at every 450mm interval and finally finishing the surface and matching the level with existing.

The rate shall include for all materials, labour, T&P, taxes, levies, scaffolding, shifting of furniture, carting away the debris and cleaning the floor etc.

PVC Conduits of required dia. And 2mm thick with all accessories e.g. long/short bends, tees, junction boxes etc. and clamps at every 450mm interval.

PVC channel of required size and 2mm thick, with all accessories e.g. angles/tees bends Junction box etc. and clamps at every 450 mm interval.

The job shall be complete, to the satisfaction of the Bank /Architect.

##### **9. 6 Amps. Switch Socket.**

Providing, storing & installing in position, effecting proper connection, testing and commissioning of set of 6 Amps. 3 Sockets + 1 switch on module plates. The work shall also include for cutting chases for moulded boxes, if required, in wall/floor (without damaging the building) and finally finishing the surface and matching the level with existing.

The rate shall include for all materials, labour, T& P, taxes, levies, scaffolding, shifting of furniture, carting away the debris and cleaning the floor etc.

The job shall be complete, to the satisfaction of the Bank /Architect.

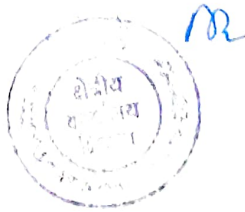
##### **10. UPS Protection System (Incoming and Outgoing).**

Providing, storing & installing in position, effecting proper connection, testing and commissioning of 40Amp DP MCB for UPS Incoming and 32Amp. DP MCB for UPS Outgoing housed in a 2 module flush/surface mounted metal/plastic enclosures. The work shall also include for cutting chases for moulded boxes, if required, in wall/floor (without damaging the building) and finally finishing the surface and matching the level with existing.

The rate shall include for all materials, labour, T&P, taxes, levies, scaffolding, shifting of furniture, carting away the debris and cleaning the floor etc.

The job shall be complete, to the satisfaction of the Bank /Architect.

*Handwritten initials: "je" and "RD" in blue ink.*



c. AIR CONDITIONING.

11. **Circuit Wiring (1.0/2.0 Ton).**

Providing, storing & installing in position, effecting proper connection, testing and commissioning of Circuit wiring with 2x4.0sq.mm + 1x 4.0 sq.mm stranded FR LSH ( Fire Resistant Low smoke Low Halogen) Cu. conductor (Finolex/Anchor/Havells/Polycab) in 25mm FR-PVC Conduit pipe heavy duty laid & concealed in wall/ floor/ panelling/ partitions or above false ceiling as per requirement. The work shall also include for cutting chases for conduits and moulded boxes, if required, in the wall/floor (without damaging the building) along with clamping the conduit at every 450mm. interval and finally finishing the surface the matching the level with existing. The rate shall include for all materials, labour, T&P, taxes, levies, scaffolding, shifting of furniture, carting away the debris and cleaning the floor etc. The job shall be complete, to the satisfaction of the Bank /Architect.

12. **A/C Box.**

Supply & fixing of flush mounted motor started switch along with 20 A 3 pin socket miniature double pole 25A MCB/ DP SWITCH with modular accessories. The rate should include the cost of all materials, labour, T&P, taxes & levies, scaffolding, shifting of furniture, carting away the debris and cleaning the floor etc. The rate shall include for all materials, labour, T&P, taxes, levies, scaffolding, shifting of furniture, carting away the debris and cleaning the floor etc. The job shall be complete & to the entire satisfaction of the Bank. The job shall be complete, to the satisfaction of the Bank /Architect.

d. MAINS & SUB MAINS. (Electrical connection of 50.0 KW. (Approx.)

13. **Cable (Main).**

Providing, storing & installing in position, effecting proper connection, testing and commissioning of 50 mm<sup>2</sup>, 3.5 Core Aluminium Cable (Armoured) between electrical meter and nearest supply pole.

The cable shall be laid in PVC conduit pipe of required dia., concealed in wall/floor/panelling/partitions or above false ceiling. The work shall also include for cutting chases for conduits, if required, in wall floor (without damaging the building) along with clamping the conduits at every 450mm interval and finally finishing the surface and matching the level with existing.

The rate shall include for all materials, labour, T&P, taxes, levies, scaffolding, shifting of furniture, carting away the debris and cleaning the floor etc.

Makes –

Cable – Havell's/Rallison/Sky Tone.

PVC Conduits – Bajaj/AKG, of required dia. and 2mm thick with all accessories e.g. long/short bends, tees, junction boxes etc. and clamps at every 450mm interval.

The job shall be completed, to the satisfaction of the Architect.

14. **Cable (Sub Main).**

Providing, storing & installing in position, effecting proper connection, testing and commissioning of, 4 Core Copper Cable (FR – LSH) from Main DB to UPS, A/C, Power and Light & Fan DB.

The cable shall be laid in PVC conduit pipe of required dia., concealed in wall/floor/panelling/partitions or above false ceiling. The work shall also include for cutting chases for conduits, if required, in wall floor (without damaging the building) along with clamping the conduits at every 450mm interval and finally finishing the surface and matching the level with existing.

The rate shall include for all materials, labour, T&P, taxes, levies, scaffolding, shifting of furniture, carting away the debris and cleaning the floor etc. PVC Conduits – Bajaj/AKG, of required dia. and 2mm thick with all accessories e.g. long/short bends, tees, junction boxes etc. and clamps at every 450mm interval.

The job shall be complete, to the satisfaction of the Bank /Architect

15. **Panel.**

Design, manufacture, providing, storing & installing in position, effecting proper connection, testing and commissioning of panel made of 14 SWG, CRCA sheet steel. It shall be dust and vermin proof. It shall have compartmentalized construction with bus bar chambers, cable alley, cable glands plate etc. as required, duly painted from inside as well outside.

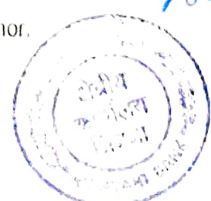
The rate shall include for all materials, labour, T&P, taxes, levies, scaffolding, shifting of furniture, carting away the debris and cleaning the floor etc.

It shall have the following -

MAIN PANEL.

3 Nos. (150 Amp ) Kit Kat switches with neutral links. Makes – Havell's/Anchor.

*Handwritten signature*



Incoming

1 No. 150 Amp. TPN, MCCB (10 KA breaking capacity), Makes – Havell's or equivalent

Busbars.

150 Amp. 3 phase, 4 strips, 415 volts, 50 Hz. copper busbars with colour coded PVC heat shrinkable sleeves.

Metering.

1 No. Voltmeter (range 0-500V), 3 phase.

1 No. Ammeter (range 0-200 Amp.), 3 phase with CT operation.

3 Nos. Phase Indication Lamps (red, yellow and blue).

Outgoing.

2 Nos. (63 Amp.) TPN, MCCB, Makes – Havell's or equivalent.

1 Nos. (80 Amp.) TPN, MCCB, Makes – Havell's or equivalent.

1 No., 63 Amp. Three Phase Change Over for D.G. Set.

**The design of panel should be got approved by the Architect before manufacturing. Also, the provision for 1/2 spare outgoing should be considered for future expansion.**

The job shall be completed, to the satisfaction of the Architect.

**16. TPN Distribution Boards – Horizontal Type.**

Providing, storing & installing in position, effecting proper connection, testing and commissioning of TPN distribution boards manufactured out of 14 SWG, CRCA sheet, duly painted (Regal Grey / Pearl Ivory), double door, flush mounted, complete with copper bus bars, neutral link, earth strip, cable alley etc. as required. The work shall also include for cutting chases for distribution boards, if required, in wall/floor (without damaging the building) and finally finishing the surface and matching the level with existing.

The rate shall include for all materials, labour, T& P, taxes, levies, scaffolding, shifting of furniture, carting away the debris and cleaning the floor etc.

It shall have the following -

6 Nos., 4 WAY TPN DB including 4 pole, 1 No. 40 & 63 Amp. MCB Isolator, for Light & Fan & Power DBs respectively.

The job shall be completed, to the satisfaction of the Architect.

**17. SPN Distribution Boards – Horizontal Type.**

Providing, storing & installing in position, effecting proper connection, testing and commissioning of TPN distribution boards manufactured out of 14 SWG, CRCA sheet, duly painted (Regal Grey / Pearl Ivory), double door, flush mounted, complete with copper bus bars, neutral link, earth strip, cable alley etc. as required. The work shall also include for cutting chases for distribution boards, if required, in wall/floor (without damaging the building) and finally finishing the surface and matching the level with existing.

The rate shall include for all materials, labour, T& P, taxes, levies, scaffolding, shifting of furniture, carting away the debris and cleaning the floor etc.

It shall have the following -

6 Nos., 12 WAY TPN DB including 4 pole, 1 No. 40 Amp. MCB Isolator, for U.P.S. DBs.

The job shall be completed, to the satisfaction of the Architect.

**18. SP MCB.**

Providing, storing & installing in position, effecting proper connection, testing and commissioning of SP MCB (10 KA breaking capacity) ranging from 6 Amps. to 32 Amp.

The rate shall include for all materials, labour, T&P, taxes, levies, scaffolding, shifting of furniture, carting away the debris and cleaning the floor etc.

The job shall be complete, to the satisfaction of the Bank /Architect

**19. DP MCB.**

Providing, storing & installing in position, effecting proper connection, testing and commissioning of DP MCB (4.5 KA breaking capacity.) ranging from 40 Amps. to 63 Amp. It shall be housed in a 2 module flush/surface mounted metal/plastic enclosures. The work shall also include for cutting chases for moulded boxes, if required, in the wall (without damaging the building) and finally finishing the surface the matching the level with existing.

The rate shall include for all materials, labour, T&P, taxes, levies, scaffolding, shifting of furniture, carting away the debris and cleaning the floor etc.

Makes –

Box – Havells or equivalent, with all accessories.

DP MCB – Havells or equivalent.

The job shall be complete, to the satisfaction of the Bank /Architect.

*ju*  
*BD*



**20. Earthing Stations.**

Providing, storing & installing in position, effecting proper connection, testing and commissioning of Earthing Stations at locations called for, including providing and burying 600mmx 600mm x 3mm thick copper electrode with its top at least 3 Mt. below ground level. It shall also have 20mm dia. G.I. pipe and C.I. funnel for watering. It shall have 2 earthing leads of 8 Sq.mm. SWG Cu. Wire in 15mm dia. G.I. pipe up to main panel. It shall include for masonry chamber of sz. 300mmx300mm made out of masonry work with C.I. frame and hinged cover. The job shall include for packing & ramming of mixture of charcoal and common salt, at least 150mm thick, all around plate electrode, complete with digging and back filling as required. All complete to the satisfaction of the Architect.

**21. Earthing Wire.**

Supply, storing & installing in position, effecting proper connection, testing and commissioning of the following copper Earthing Wire.

The wire shall be laid in PVC conduit pipe of required dia., concealed in wall/floor/panelling/partitions or above false ceiling. The work shall also include for cutting chases for conduits, if required, in wall floor (without damaging the building) along with clamping the conduits at every 450mm interval and finally finishing the surface and matching the level with existing.

The rate shall include for all materials, labour, T&P, taxes, levies, scaffolding, shifting of furniture, carting away the debris and cleaning the floor etc.

It shall have the following -

Wire - 8.0 Sq.mm. SWG Cu. Wire.

Makes -

PVC Conduits - Bajaj/AKG, of required dia. and 2mm thick with all accessories e.g. long/short bends, tees, junction boxes etc. and clamps at every 450mm interval.

The job shall be complete, to the satisfaction of the Bank /Architect

**e. FIXTURES.**

**22. Light - LED (Square Type).**

Providing, storing & installing in position, effecting proper connection, testing and commissioning of LED Type Light fitting, recessed in false ceiling, with all accessories.

a. 600x600, 60W (Surface Mounted)

b. 300x300, 30W (Surface Mounted)

c. 150x150, 18W (Surface Mounted)

d. 100x100, 12W (Surface Mounted)

e. Tube light (LED) - 18 Watt.

f. Bracket (LED), 7 Watt

The rate shall include for all materials, labour, T&P, taxes, levies, scaffolding, shifting of furniture, carting away the debris and cleaning the floor etc.

The job shall be complete, to the satisfaction of the Architect.

**23. Wall Mounted Fan. (400mm dia.).**

Providing, storing & installing in position, effecting proper connection, testing and commissioning of Wall Mounted Fan of 400 mm dia. impeller assembled with three blades and 100 spokes guard. It shall also include for all accessories.

The work shall also include for cutting, if required in the wall (with out damaging the building) along with grouting the rag bolts at required position and finally finishing the surface and matching the level with existing.

The rate shall include for all materials, labour, T&P, taxes, levies, scaffolding, shifting of furniture, carting away the debris and cleaning the floor etc.

Makes -

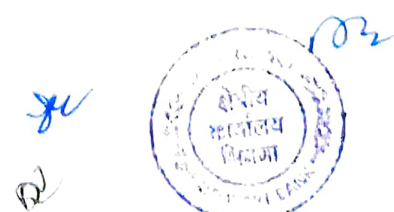
Fixture - Crompton Greaves Ltd., Model - Super Deluxe, Colour - Ivory/as suggested by the Arch.

Ceiling rose - Anchor - Penta, Model - 3257.

The job shall be complete, to the satisfaction of the Architect.

**24. Ceiling Fan (1200/900mm dia.).**

Providing & fixing in position, effecting proper connection, testing and commissioning of Ceiling Fan of 1200/900mm dia. sweep assembled with statically and dynamically balanced motor and three blades, capacitors type motor with internal starter and external rotor pattern and two double ball bearings which are accessible for lubrication. It shall also include for all accessories e.g. 300mm long (or as required on site) down rod, bottom cover, top canopy, rubber shackle, capacitors, compact electronic power saving regulator of 300 watts., ceiling rose etc.





It shall be suspended from the hooks/fan hook boxes. The work shall also include for cutting holes of required size, if required, in the roof (without damaging the building) along with grouting the fan hook boxes and finally finishing the surface and matching the level with existing.

The rate shall include for all materials, labour, T&P, taxes, levies, scaffolding, shifting of furniture, carting away the debris and cleaning the floor etc.

Makes –

Fixture – Crompton Greaves Ltd., Model – High Breeze.

Regulator – Anchor Roma - (Model – 22 557), with required Modular Plates fixed on metal (for concealed) or PVC (for surface mounted) Moulded boxes – Model – Tressa, Colour – White.

The job shall be complete, to the satisfaction of the Architect.

**25. Exhaust Fan.**

Receiving & fixing in position, effecting proper connection, testing and commissioning of Exhaust/Fresh Air Fan of 300mm dia.

The work shall also include for cutting holes of required dia., if required, in the wall (without damaging the building) along with grouting the rag bolts at required position and finally finishing the surface and matching the level with existing.

The rate shall include for all accessories materials, labour etc.

The job shall be complete, to the satisfaction of the Bank /Architect.

**e. TELEPHONE & LAN POINTS.**

**26. Telephone Junction Box.**

Supply, storing & installing in position, effecting proper connection, testing and commissioning of Telephone Junction Box, duly housed in M.S. enclosure. The work shall also include for cutting chases for moulded boxes, if required, in the wall (without damaging the building) and finally finishing the surface the matching the level with existing.

The rate shall include for all materials, labour, T&P, taxes, levies, scaffolding, shifting of furniture, carting away the debris and cleaning the floor etc. The job shall be complete, to the satisfaction of the Bank /Architect.

It shall have the following -

Box - 10 pair TJB

Makes – Krone or equivalent, with all accessories.

The job shall be complete, to the satisfaction of the Bank /Architect.

**27. Telephone Cable.**

Supply, storing & installing in position, effecting proper connection, testing and commissioning of Telephone Cable laid in PVC conduit pipe of required dia., concealed in wall/floor/panelling/partitions or above false ceiling. The work shall also include for cutting chases for conduits and moulded boxes, if required, in the wall/floor (without damaging the building) along with clamping the conduits at every 450mm interval and finally finishing the surface and matching the level with existing.

The rate shall include for all materials, labour, T&P, taxes, levies, scaffolding, shifting of furniture, carting away the debris and cleaning the floor etc.

It shall have the following -

a. 10 pair – 0.6mm. dia., including termination/crimping at both the ends.

Makes -

Cable - Havells/Rallison/Sky Tone

PVC Conduit – Bajaj/AKG, of required dia. and 2mm thick, with all accessories e.g. long/short bends, tees, junction boxes etc. and clamps at every 450mm interval.

The job shall be complete, to the satisfaction of the Bank /Architect.

**28. Telephone Points with Wiring.**

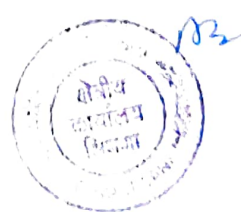
Providing, storing & installing in position, effecting proper connection, testing and commissioning of Telephone Points (2 pin) on module plates with all accessories. It shall have GI Pull Wire laid in PVC conduit pipe (2mm thick, with all accessories e.g. long/short bends, tees, junction boxes etc.) of required dia., concealed in wall/floor/panelling/partitions or above false ceiling. The work shall also include for cutting chases for conduits and moulded boxes, if required, in the wall/floor (without damaging the building) along with clamping the conduits at every 450mm interval and finally finishing the surface and matching the level with existing.

The rate shall include for all materials, labour, T&P, taxes, levies, scaffolding, shifting of furniture, carting away the debris and cleaning the floor etc. The job shall be complete, to the satisfaction of the Bank /Architect.

Makes -

Wire - Finotex/Poly cab.

*Handwritten initials 'ju' and 'AD' in blue ink.*



Telephone Socket - Anchor - Deluxe, Socket / Jack – 2 Lines (Model 11572)

with required laminated Plates fixed on metal (for concealed) or PVC (for surface mounted)  
Moulded boxes.

PVC Conduit – Bajaj/AKG, of required dia. and 2mm thick, with all accessories e.g. long/short bends, tees, junction boxes etc. and clamps at every 450mm interval.

**29. Data Cabling with Points.**

Providing, storing & installing in position, effecting proper connection, testing and commissioning of Data Cabling Points (2 pin) on module plates with all accessories. It shall have GI Pull Wire laid in PVC conduit pipe (2mm thick, with all accessories e.g. long/short bends, tees, junction boxes etc.) of required dia., concealed in wall/floor/panelling/partitions or above false ceiling. The work shall also include for cutting chases for conduits and moulded boxes, if required, in the wall/floor (without damaging the building) along with clamping the conduits at every 450mm interval and finally finishing the surface and matching the level with existing.

It shall also include for Cat - 5 data cable for data of approved make, including termination at both the ends.

The rate shall include for all materials, labour, T&P, taxes, levies, scaffolding, shifting of furniture, carting away the debris and cleaning the floor etc. The job shall be complete, to the satisfaction of the Bank /Architect.

**30. 9U Rack Networking Cabinet.**

Providing, storing & installing in position, effecting proper connection, testing and commissioning of 9U Rack Networking Cabinet.

The rate shall include for all materials, labour, T&P, taxes, levies, scaffolding, shifting of furniture, carting away the debris and cleaning the floor etc. The job shall be complete, to the satisfaction of the Bank /Architect.

**31. 24 Port Patch Panel.**

Providing, storing & installing in position, effecting proper connection, testing and commissioning of 24 Port Patch Panel.

The rate shall include for all materials, labour, T&P, taxes, levies, scaffolding, shifting of furniture, carting away the debris and cleaning the floor etc. The job shall be complete, to the satisfaction of the Architect.

**32. Patch Chord.**

Providing, storing & installing in position, effecting proper connection, testing and commissioning of Patch Chord.

The rate shall include for all materials, labour, T&P, taxes, levies, scaffolding, shifting of furniture, carting away the debris and cleaning the floor etc. The job shall be complete, to the satisfaction of the Bank /Architect.

It shall have the following -

a. Patch Cord – 1 Mt. - ECAT 6

b. Patch Cord – 2 Mt. - ECAT 6

The job shall be complete, to the satisfaction of the Bank /Architect

**33. PVC Conduits For Alarm & LAN Etc.**

Supply, storing & installing in position of PVC conduit pipe (2mm thick, with all accessories e.g. long/short bends, tees, junction boxes etc.) of required dia. with GI Pull Wire laid in it. These shall be concealed in wall/floor/panelling/partitions or above false ceiling. The work shall also include for cutting chases for conduits and moulded boxes, if required, in the wall/floor (without damaging the building) along with clamping the conduits at every 450mm interval and finally finishing the surface and matching the level with existing.

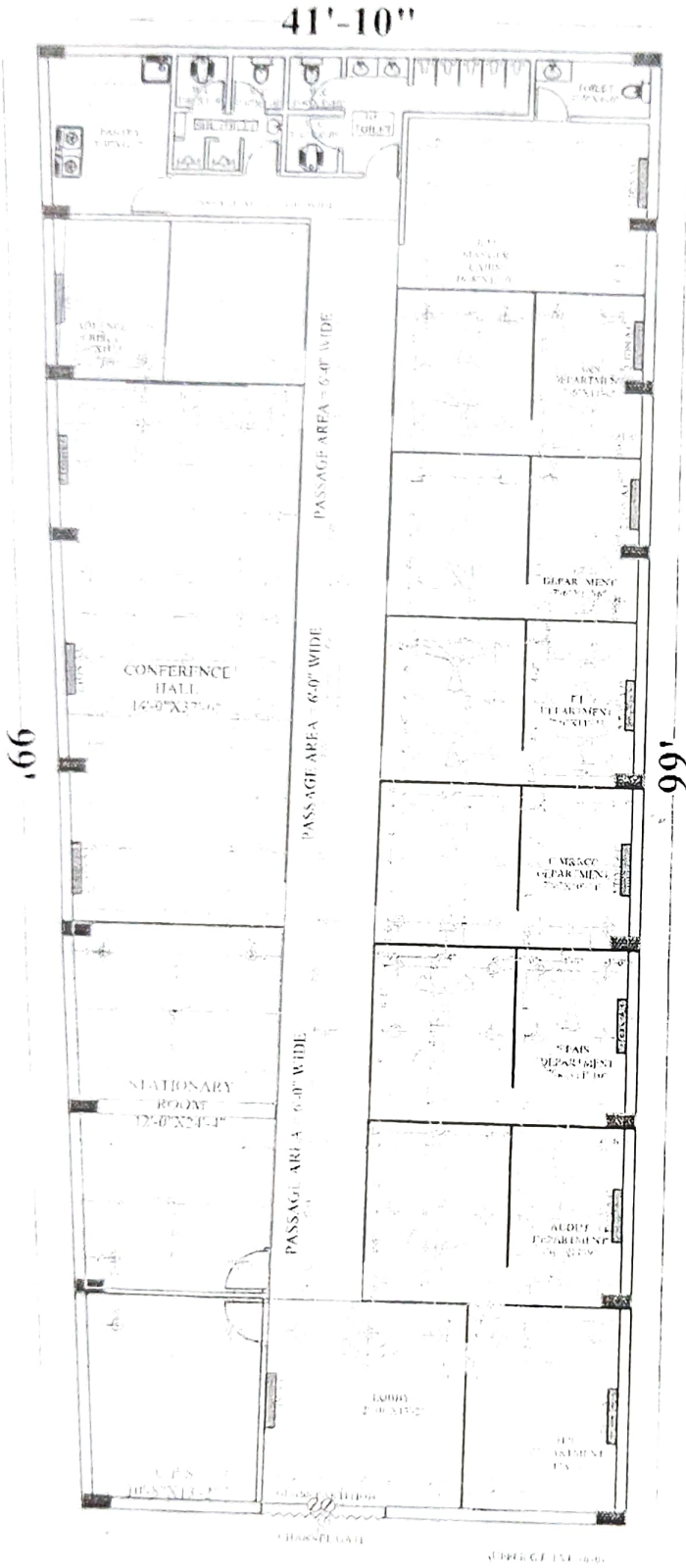
The rate shall include for all materials, labour, T&P, taxes, levies, scaffolding, shifting of furniture, carting away the debris and cleaning the floor etc.

a. 25mm dia.

b. 19mm dia.

The job shall be complete, to the satisfaction of the Architect





LEGEND	
	FAN POINT @ CEILING
	GYSER +7'-0" HEIGHT
	16 AMP. A.C. POINT @1'-6" HIGH
	15AMP. POINT @ 4'-0" IN KIT., 6'-0" IN TOI.
	5AMP. POINT @4'-0" IN KIT/ TOILET
	SWITCH BOARD @ 4'-0" HIGH
	SHOW LAMP @9'-0" HIGH
	BRACKET LIGHT POINT @ 9'-0" HIGH
	CEILING LIGHT POINT
	TELEVISION POINT @4'-0" HIGH
	FOOT LIGHT @1'-0" HIGH
	TUBE LIGHT @ 9'-0" HIGH
	M.C.B. @ 6'-0" HIGH
	GATE LIGHT
	METER BOX @ 6'-0" HIGH
	CALL BELL @ 5'-0" HIGH
	BUZZER @ 9'-0" HIGH
	MIRROR LIGHT @6'-0" HIGH
	EXHAUST FAN
	CHANDELIER

ARYA VART BANK-  
REGIONAL OFFICE BHINGA  
ELECTRICAL PLAN



**VIVEK SINGH** Digitally signed by VIVEK SINGH  
Date: 2024.05.22 18:58:28 +05'30'

